

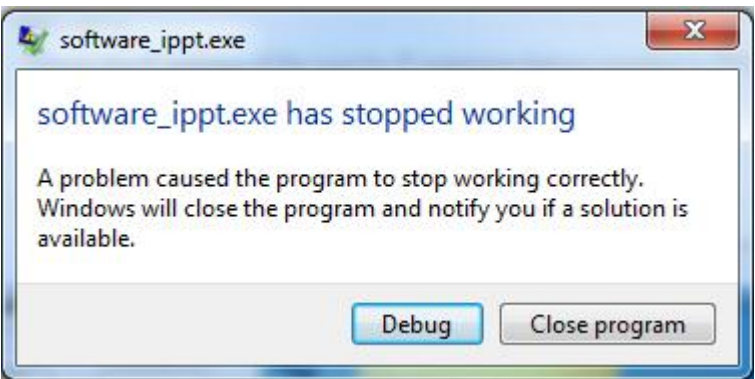
IP Softphone related frequently asked questions and remarks:

SECONDARY PBX?

IP Softphone does not support the secondary PBX and can be registered to only one PBX.

APPLICATION FAILURE?

When a network failure occurs, following application failure dialogue can pop up and IP Softphone may be terminated. Please reconnect your PC to the network, and re-start the IP Softphone.



DUPLICATED ENTRIES IN INCOMING CALL LOG?

When the incoming call log entries are 2, 3, or 4, the entries are duplicated in the list view. After the entries become 5 or more, the list shows one entry per line.

[List view example: 2 entries]

Icon	Name	Date	Time	Day
[Icon]	Joe Funning	OCT.14	12:06PM	TUE...
[Icon]	Ben Ashby	OCT.14	12:03PM	TUE...
[Icon]	Joe Funning	OCT.14	12:06PM	TUE...
[Icon]	Ben Ashby	OCT.14	12:03PM	TUE...
[Icon]	Joe Funning	OCT.14	12:06PM	TUE...

Original call log entries.

Duplicated call log entries.

[List view example: 5 entries]

[Icon]	[Icon]	[Icon]	[Icon]	[Icon]
Olga Carnot	OCT.14	12:18PM	TUE...	
Claus Hgmayer	OCT.14	12:17PM	TUE...	^
Minerva Barini	OCT.14	12:10PM	TUE...	
Joe Funning	OCT.14	12:06PM	TUE...	^
Ben Ashby	OCT.14	12:03PM	TUE...	